

# Using Electric Steam

in a Microbrewery Application



**SUSSMAN**  
ELECTRIC BOILERS

# Why Electric Steam?



Electric steam boilers are the optimal choice for microbreweries producing 3 to 20 barrels per batch. Here's why:

## You Get Better and Consistent Results

There's no fire under your tank or heating element in your wort. Our steam gently envelopes your jacketed tank, like a double boiler, to more precisely control the temperature. The steam distributes evenly as it wraps around your tank, eliminating hot spots that can scorch your beer. The result is better control over your brewing and greater flavor complexity from your hops.

## Easy Installation

There's no exhaust or gas piping to deal with, making the installation far simpler and less costly than traditional methods. All you need to install is electricity and simple plumbing. Best of all: there's no need for a fire-rated room.

## Efficient

With electric steam, your boiler is located close to the point of use, resulting in very little heat loss. In addition, 98% of the electrical energy used goes into heating the water and is converted to steam. It's one of the most efficient methods available.

## Safer

Electric steam is safer. There are no open flame or burners, or any danger in the event of low water levels. **Generally, there are also no special fire or health and safety precautions needed.**



## Low Maintenance

With no burner, fuel piping or extremely high combustion surface temperatures to deal with, there is much less upkeep. There are no direct immersion kettle elements to replace. Repairs can be made without special tools or advanced training.

## Cleaner and Quieter

Since there are no combustibles, electric steam is a far cleaner option than traditional methods. It's also a greener option for the environment, since with no exhaust it is pollution-free at the point of use. It is also one of the quietest steam solutions.

It's no wonder that electric steam is the first choice of brewmasters who make 3 to 20 barrels per batch.

# Why Sussman Electric Boilers?

At Sussman, we're proud to be leaders in providing boilers to the microbrew market. As one of the few companies making electric steam boilers for the microbrewing industry, we're recognized as experts in the space.

Sussman is the safe and only choice, producing electric steam products for more than 100 years.



# Electric Steam Boiler Features

- Safe, efficient steam - no on-site combustion, chimney, vents or gas lines
- Small in size - can be located almost anywhere. No boiler room required
- Surprisingly affordable steam source to produce "quality" beer at the tap
- Easy installation, only requires water feed connection and electrical hookup
- Built to Sec. I of ASME Boiler and Pressure Codes, National Board registered
- UL, cUL Listed, ASME CSD-1 compliant
- Fully Insulated Vessel
- Stainless Steel Heating Elements

## SAMPLE GUIDELINES FOR SIZING\*

Approximately 10kW per Barrel

BARRELS	MODELS	KW	BTUH	HP
2	ES24	24	82,000	2.5
3	ES30	30	102,000	3
3.5	ES36	36	122,000	3.7
4	ES48	48	163,000	4.9
6	ES60	60	204,000	6.1
7	ES72	72	245,000	7.4
8	ES85	84	286,000	8.6
10	ES100	108	368,000	11
14	ES135	144	491,000	14.6
15	ES160	158	546,000	16.1
18	ES180	180	614,000	18.4
20	SVS200	200	682,000	20.4
24	SVS240	240	819,000	24.5

\*Contact Sussman for specific sizing for your system.

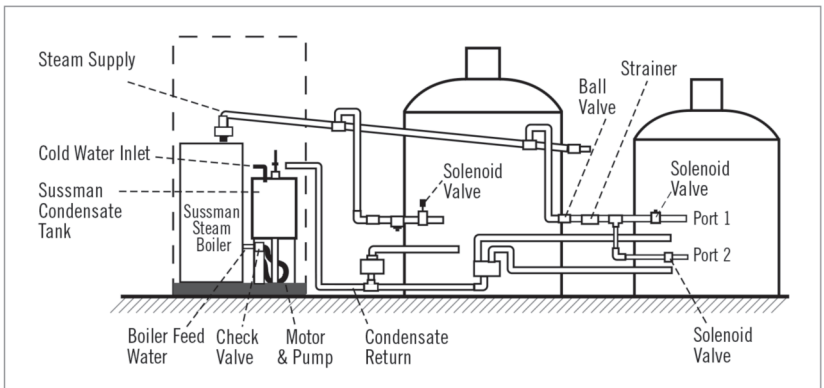


ES BOILER



SVS BOILER

## Typical System Arrangement



## You Can Trust Sussman, the Microbrew Specialists

- 100+ years of steam engineering experience
- Network of dedicated, nationwide representatives across the country
- Longer warranty
- Vertical tank design for a compact footprint

We'll be at your side every step of the way.



**SUSSMAN**  
ELECTRIC BOILERS

Your dependable source for fast, economical steam energy.

[sussmanboilers.com](http://sussmanboilers.com)

1-800-221-1522

A Brand of Diversified Heat Transfer, Inc.  
439 Main Road, Towaco, New Jersey 07082